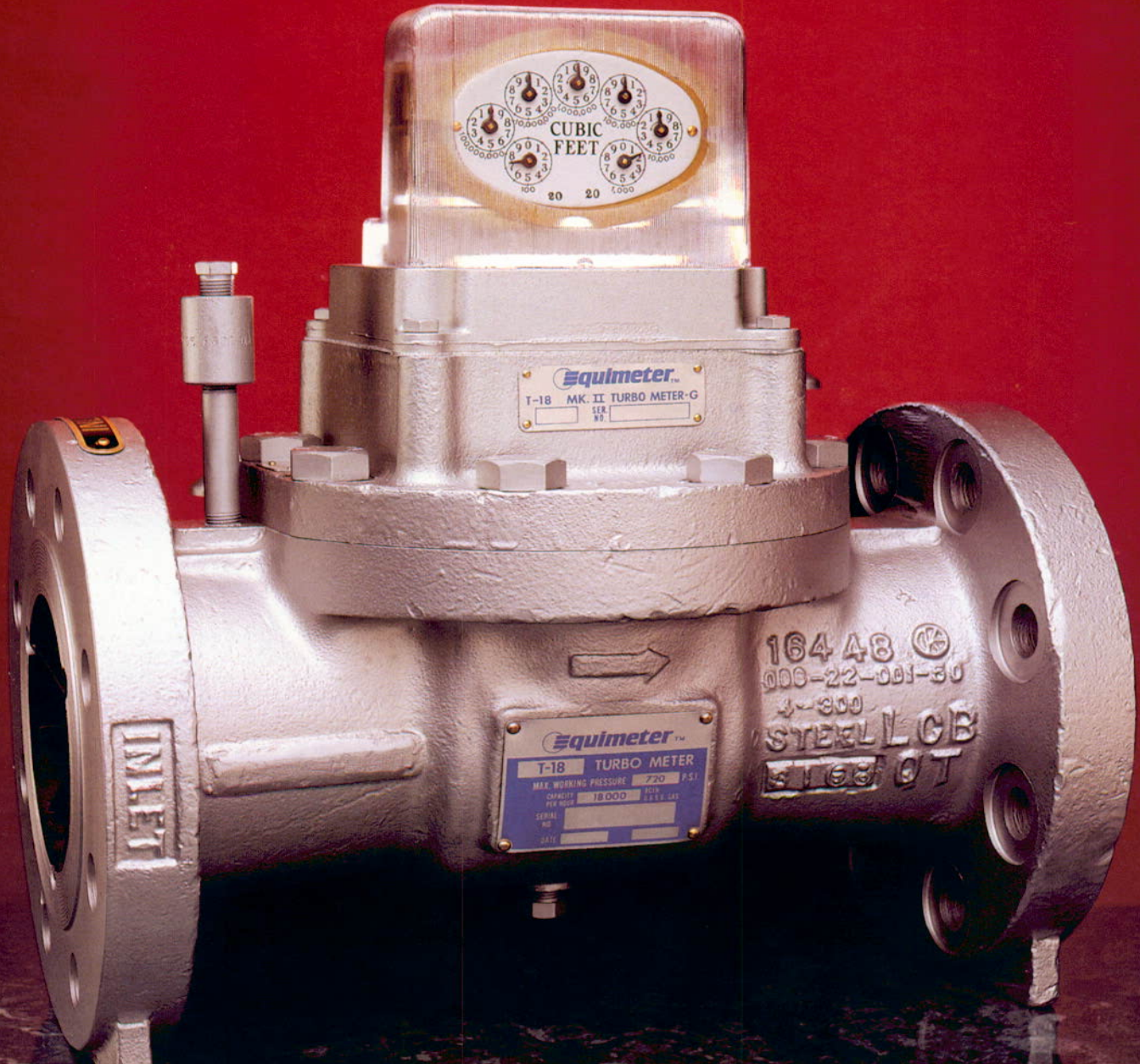


Production Turbo-Meters Mark II-PT Series

M-1072
Rev. 5

Sizes 4", 6" and 8"



SENSUS

IN THE PRODUCTION FIELD

The gas production field can be exceptionally harsh on any meter. That's why Equimeter's Production PT Turbo-Meters were engineered specifically for use in the production field.

The PT Turbo-Meter offers rugged construction to rid bearing problems related to rough production services. In addition, Equimeter builds confidence into every PT Turbo-Meter through technical expertise, personal attention and quality.

Equimeter currently supplies their Mark II series to provide a 4" PT-18, 6" PT-30, and 8" PT-60 to handle large production loads.

Heavy-Duty Construction

The PT Turbo-Meter was designed for heavy-duty field applications. Its durable construction can easily withstand the moist, dirty treatment found in gas producing fields.

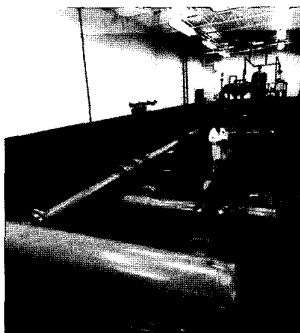
Variations in gas pressure and flow that can cause mild shock loads on the meter do not present a problem to this heavy-duty meter. Even more important is the fact the PT Turbo-Meter works well in areas where frequent and regular maintenance cannot be guaranteed.

To back up these claims, the PT Turbo-Meter has been thoroughly field tested. It has been proven capable of undergoing the rough treatment usually experienced on gas production applications.

TESTING

Equimeter's high pressure loop facility, shown below, tests each meter to be accurate.

And since most production work is completed at high pressure, Equimeter calibrates all PT meters, internal mechanisms and housing assemblies at the elevated pressure specified by the customer.



MODULE EXCHANGE

As with all Equimeter Turbo-Meters, a module exchange program is available for the PT Turbo-Meters.

In order to facilitate the use of these meters in the production fields, the calibrated measuring unit may be purchased at a lower level of assembly than the internal mechanism assembly, thereby reducing shipping and handling costs normally incurred during repair and changeout.

This lower level of assembly is called a "calibrated internal housing assembly" which consists of the rotor and bearing bracket assembly installed in the internal housing along with the appropriate change gears.

Besides being able to purchase these units at the (1) "calibrated internal housing assembly" (CIHA) level, they may be purchased as a (2) complete meter and, (3) as a calibrated internal mechanism assembly (CIMA). All three levels of assembly are interchangeable with the standard meter. Therefore, if a standard meter is already installed on an application and it is desirable to convert to heavy-duty (PT) construction, a heavy-duty CIMA or CIHA may be purchased to replace the standard meter without changing out the body.

SPECIFICATIONS AND PERFORMANCE

ANSI 300

ANSI 600

4" Mark II PT-18

6" Mark II PT-30

8" Mark II PT-60

Inlet Pressure PSIG	4" Mark II PT-18		6" Mark II PT-30		4" and 6" Range ±1%	8" Mark II PT-60		8" Range ±1%
	Maximum MSCF Flow Rate per					Maximum MSCF Flow Rate per		
	Hour	Day	Hour	Day		Hour	Day	
100	140	3,360	234	5,616	12:1	468	11,232	17:1
200	262	6,280	439	10,536	16:1	878	21,072	23:1
300	386	9,264	644	15,456	19:1	1,287	30,888	28:1
400	510	12,240	849	20,376	22:1	1,697	40,728	32:1
500	632	15,160	1,053	25,272	25:1	2,106	50,544	36:1
600	754	18,096	1,258	30,192	27:1	2,516	60,384	39:1
700	876	21,024	1,463	35,112	29:1	2,925	70,200	42:1
800	1,000	24,000	1,668	40,032	31:1	3,336	80,064	45:1
900	1,120	26,880	1,872	44,928	33:1	3,745	89,880	47:1
1,000	1,245	29,880	2,077	49,848	35:1	4,154	99,696	50:1
1,100	1,368	32,832	2,282	54,768	37:1	4,564	109,536	52:1
1,200	1,490	35,760	2,487	59,688	38:1	4,973	119,352	55:1
1,300	1,615	38,760	2,692	64,608	40:1	5,383	129,192	57:1
1,400	1,740	41,760	2,896	69,504	41:1	5,792	139,008	59:1

All flow rates based on standard conditions of 14.73 psia and a 4 ounce metering base. Supercompressibility is not included in these capacity tables. Differential and range figures are for natural gas of 0.6 specific gravity.

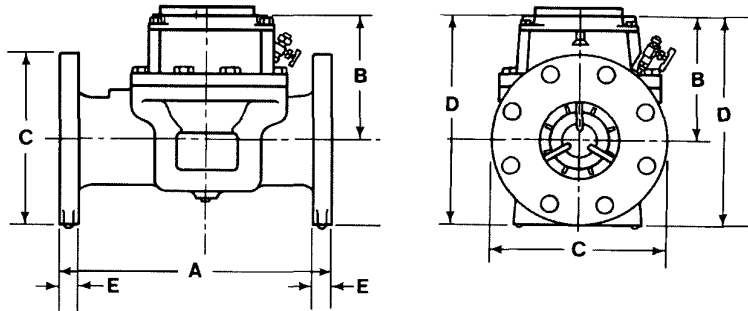
In sizing meters, maximum instantaneous flow rates should not exceed maximum MSCF detailed above.

DIMENSIONS

(inches)

All PT type meters are available in ANSI 300 class steel bodies or ANSI 600 class steel bodies. None of the external dimensions or meter weights for PT type meters have changed from standard high pressure Mark II meters.

	4" Mark II PT-18		6" Mark II PT-30		8" Mark II PT-60	
	ANSI 300	ANSI 600	ANSI 300	ANSI 600	ANSI 300	ANSI 600
A	15 ¹ / ₂	15 ¹ / ₂	22 ¹ / ₂	22 ¹ / ₂	27 ¹ / ₄	27 ¹ / ₄
B	7 ⁵ / ₁₆	7 ⁵ / ₁₆	8 ⁷ / ₈	8 ⁷ / ₈	10 ⁵ / ₁₆	10 ⁵ / ₁₆
C	10	10 ³ / ₄	12 ¹ / ₂	14	15	16 ¹ / ₂
D	12 ⁵ / ₁₆	12 ¹¹ / ₁₆	15 ⁵ / ₈	15 ⁷ / ₈	17 ¹³ / ₁₆	18 ⁹ / ₁₆
E	1 ¹ / ₄	1 ³ / ₄	1 ⁷ / ₁₆	2 ¹ / ₈	1 ⁵ / ₈	2 ⁷ / ₁₆
WP (psi)	720	1440	720	1440	720	1440
Weight (lbs.)	140	175	280	336	430	596

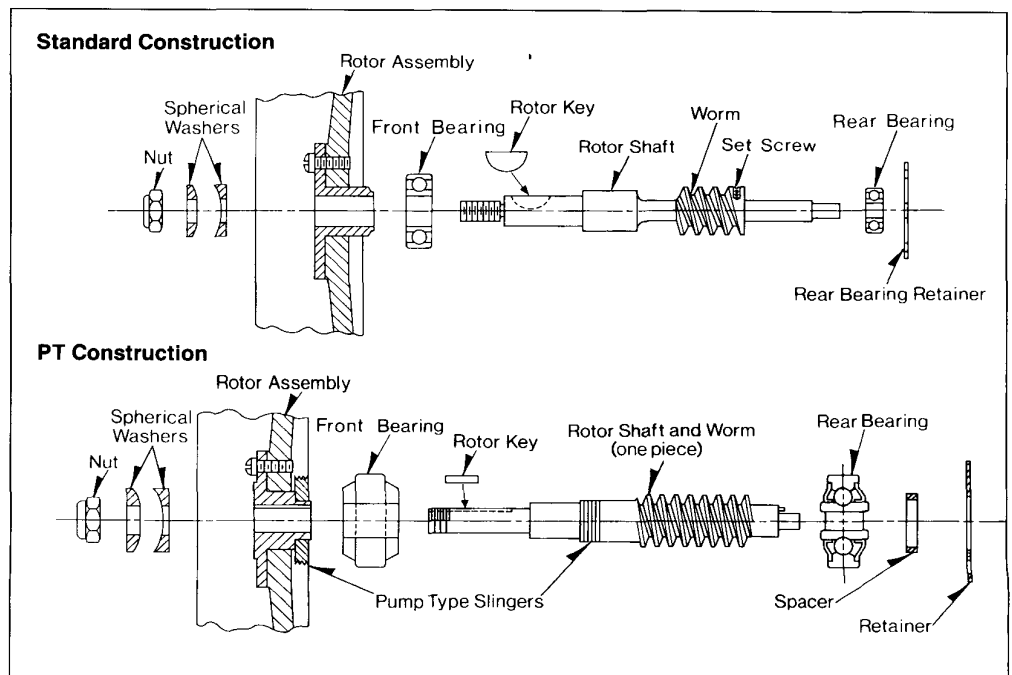


CONSTRUCTION

Shown are the internal parts of a standard high pressure Turbo-Meter versus the internal parts of a PT Turbo-Meter.

Note the heavy-duty sealed front bearing on the PT unit. These bearings have been proven to be effective on actual offshore production test applications. The PT unit rotor shaft is much heavier and the worm is an integral part of the shaft, while on the standard unit, the shaft and worm are separate items held together by set screws.

Pump type slingers on the rotor shaft and rotor assembly help insure that foreign material doesn't get into the front bearing area.





805 Liberty Boulevard

P.O. Box 528

DuBois, PA 15801

814-375-8875

Fax 814-375-8460

Authorized Distributor

All products purchased and services performed are subject to Sensus' terms of sale, available at either; <http://na.sensus.com/TC/TermsConditions.pdf> or 1-800-METER-IT. Sensus reserves the right to modify these terms and conditions in its own discretion without notice to the customer.

This document is for informational purposes only, and SENSUS MAKES NO EXPRESS WARRANTIES IN THIS DOCUMENT. FURTHERMORE, THERE ARE NO IMPLIED WARRANTIES, INCLUDING WITHOUT LIMITATION, WARRANTIES AS TO FITNESS FOR A PARTICULAR PURPOSE AND MERCHANTABILITY. ANY USE OF THE PRODUCTS THAT IS NOT SPECIFICALLY PERMITTED HEREIN IS PROHIBITED.