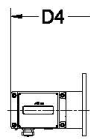


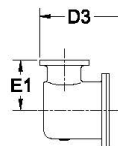


ROMET

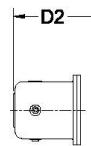
Rotary Gas Meters



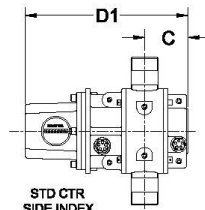
AdEM



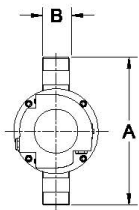
STDID / DCID



STD CTR
END INDEX



STD CTR
SIDE INDEX



METER SIZE	A	B	C	D1	D1 (no Mag. Hsg.)	D2	D3	D4	E1	WEIGHT (lbs)
RM40	10.50"	1.5" NPT	3.44"	11.29"	8.83"	12.77"	13.60"	14.49"	4.00"	13-16

RM40 - SOFT METRIC

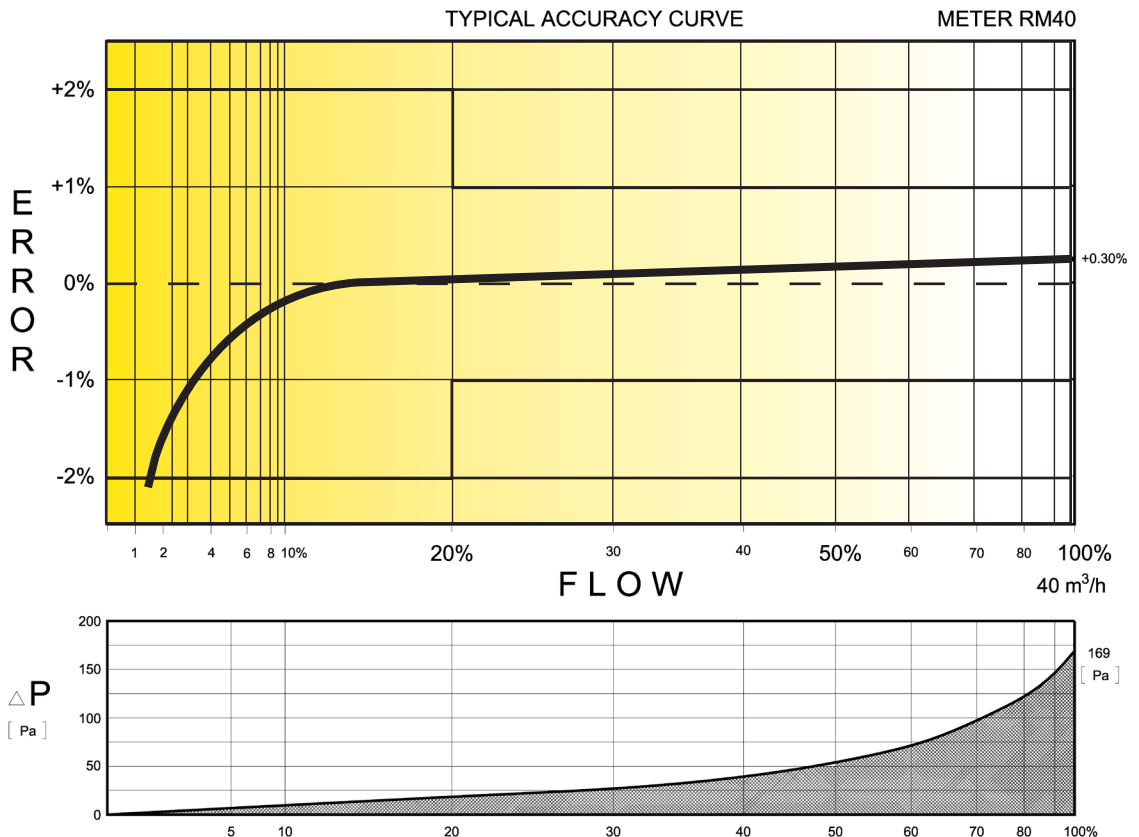
SOFT METRIC RM40 1.5" NPT CONNECTION

TECHNICAL SPECIFICATION

Connection (Threaded)	NPT	1.5"
MAOP	(kPa)	1206/1400
Flow Capacity	(m ³ /h)	40
Rangeability @ ± 1% Error		40:1
Rangeability @ ± 2% Error		60:1
Start Rate	(m ³ /h)	.056
Stop Rate	(m ³ /h)	.042
Differential @ 100% Flow	(Pa)	169
Instrument Drive Rate	(m ³ /rev)	.1
LF Pulser (Optional on Std Ctr)	(m ³ /pulse)	.1

CORRECTED FLOW CAPACITY AND TYPICAL ACCURACY GUIDE

RM40 METER (SM ³ /H)	
Gauge Pressure kPa 1.72	RM40 Qmax = 40 m ³ /hr
5	41.8
10	43.8
50	59.6
100	79.3
150	99.1
200	118.8
250	138.6
300	158.3
500	237.2
750	335.9
1000	434.6
1100	474.1
1200	513.6



ROMET

GAS METERS AND ELECTRONIC INSTRUMENTS
 Phone 905-624-1591 USA 1-800-387-3201
 www.rometlimited.com • email: romet@rometlimited.com

The values quoted are typical of normal production. They do not constitute a specification. Romet Limited reserves the right to change any information in this literature without notice. All of the information and data in this literature has been carefully compiled and thoroughly checked. However, Romet Limited will not assume responsibility for any possible omissions or errors.

ROMET and ROMET & DESIGN are registered trademarks of Romet Limited. Romet Limited's gas metering technology is protected under U.S. Patent No. 4,910,519 and 6,453,721 and Canadian Patent No. 1,293,568.