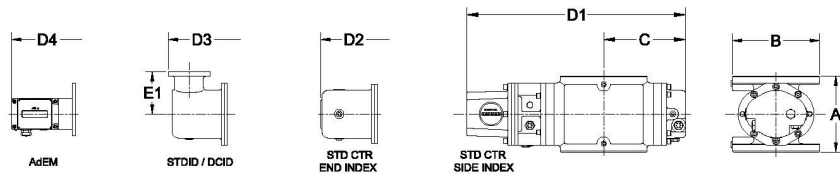
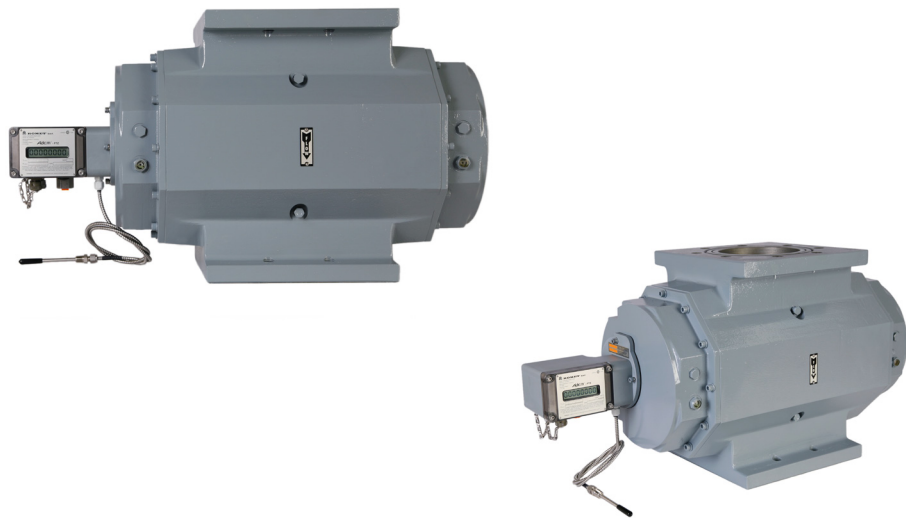




ROMET

Rotary Gas Meters



METER SIZE	ANSI 125 FF FLANGE	A	B	C	D1	D2	D3	D4	E1	WEIGHT (lbs)
RM1100	6"	16.00"	11.25"	11.37"	25.83"	27.31"	28.09"	29.03"	4.00"	155

RM1100 - SOFT METRIC

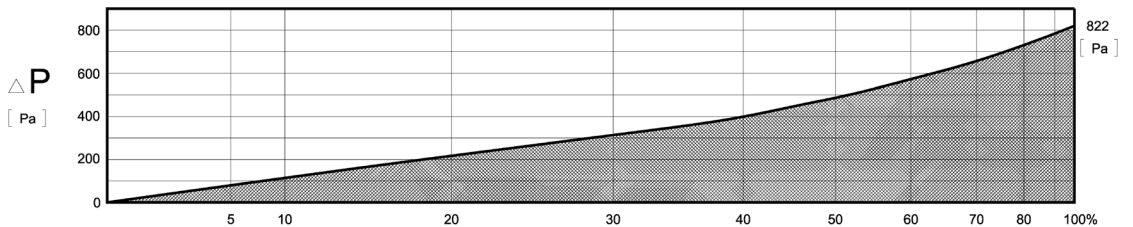
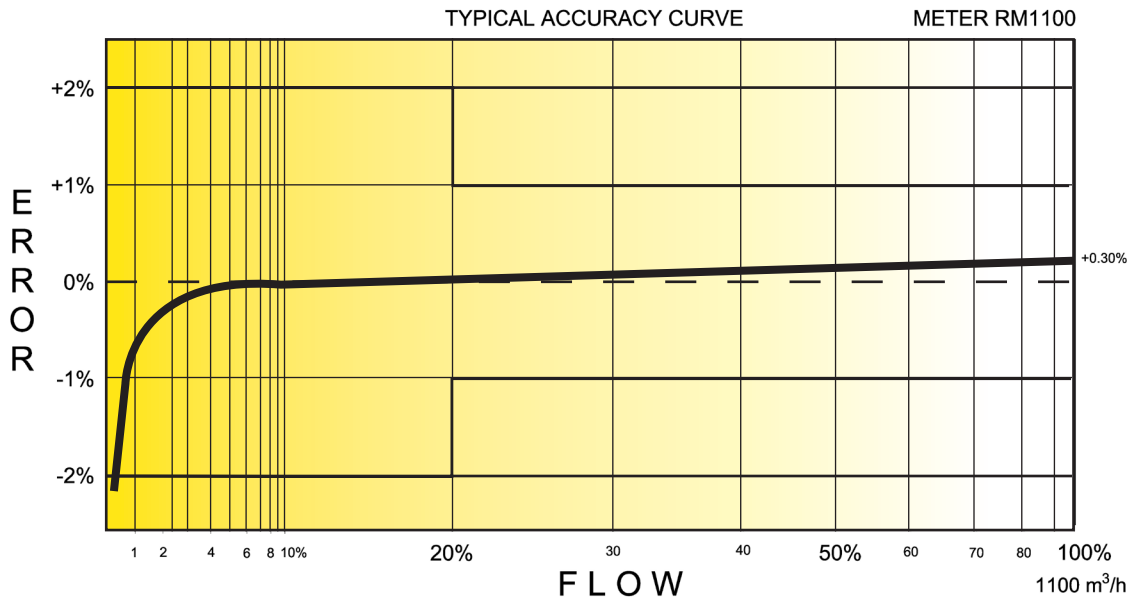
SOFT METRIC RM1100 6" FLANGE CONNECTION

TECHNICAL SPECIFICATION

Connection (Flange)	ANSI 125FF	6"
MAOP	(kPa)	1206
Flow Capacity	(m ³ /h)	1100
Rangeability @ ± 1% Error		120:1
Rangeability @ ± 2% Error		250:1
Start Rate	(m ³ /h)	.620
Stop Rate	(m ³ /h)	.396
Differential @ 100% Flow	(Pa)	822
Instrument Drive Rate	(m ³ /rev)	1.0/10.0
LF Pulser (Optional on Std Ctr)	(m ³ /pulse)	1.0/10.0

CORRECTED FLOW CAPACITY AND TYPICAL ACCURACY GUIDE

RM1100 METER (SM ³ /H)	
Gauge Pressure kPa	RM1100 Qmax = 1100 m ³ /hr
1.72	
5	1150.7
10	1205.0
50	1639.0
100	2182.1
150	2724.9
200	3267.7
250	3810.5
300	4353.3
500	6524.5
750	9238.6
1000	11952.6
1100	13038.2
1200	14123.8



ROMET

GAS METERS AND ELECTRONIC INSTRUMENTS

Phone 905-624-1591 USA 1-800-387-3201

www.rometlimited.com • email: romet@rometlimited.com

The values quoted are typical of normal production. They do not constitute a specification. Romet Limited reserves the right to change any information in this literature without notice. All of the information and data in this literature has been carefully compiled and thoroughly checked. However, Romet Limited will not assume responsibility for any possible omissions or errors.

ROMET and ROMET & DESIGN are registered trademarks of Romet Limited. Romet Limited's gas metering technology is protected under U.S. Patent No. 4,910,519 and 6,453,721 and Canadian Patent No. 1,293,568.