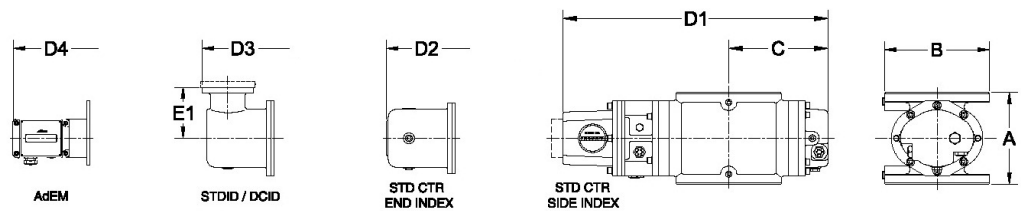
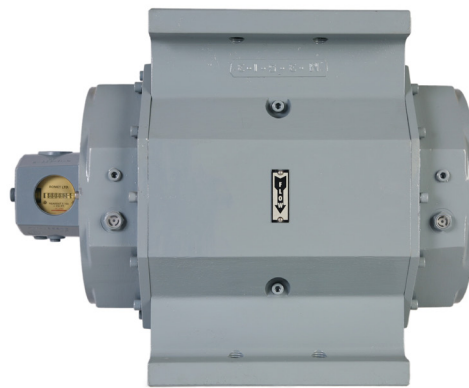




**ROMET**

# Rotary Gas Meters



METER SIZE	ANSI 125 FF FLANGE	A	B	C	D1	D2	D3	D4	E1	WEIGHT (lbs)
RM25000	6"	16.00"	11.25"	8.93"	20.95"	22.43"	23.21"	24.15"	4.00"	126

**RM25000 - IMPERIAL**

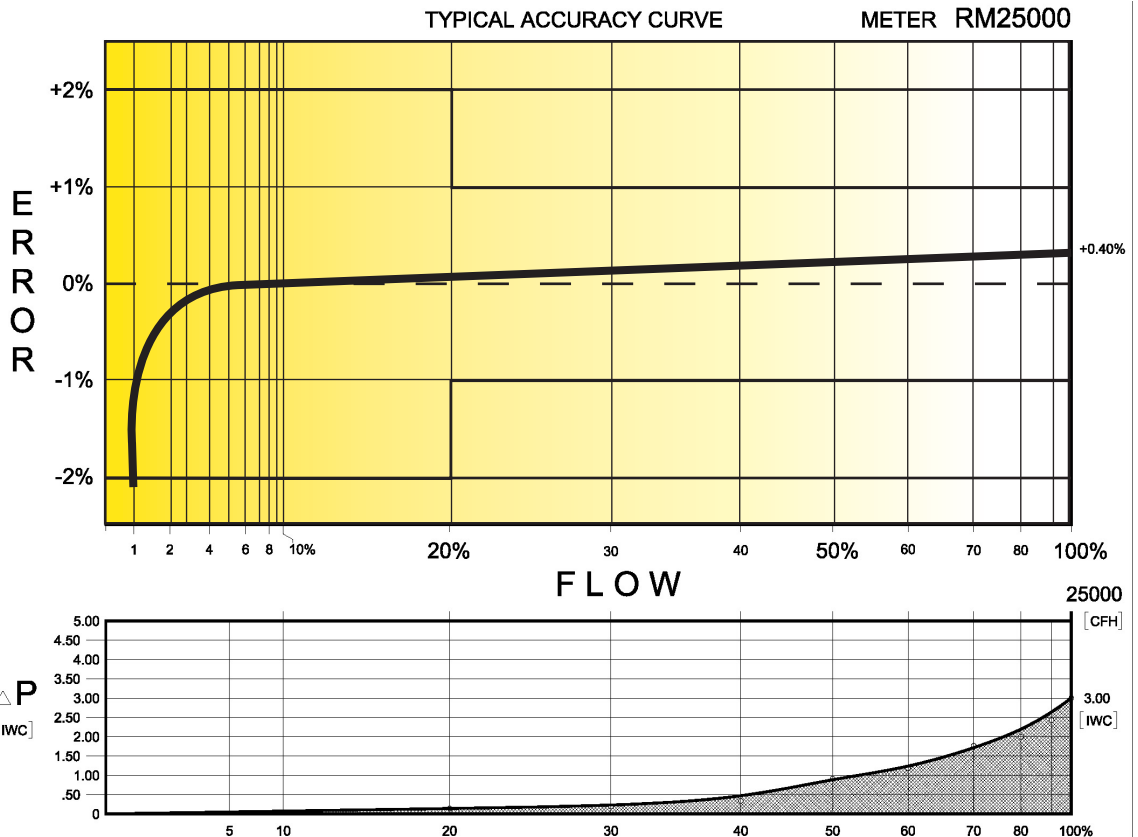
# IMPERIAL RM25000 6" FLANGE CONNECTION

## TECHNICAL SPECIFICATION

Connection (Flanged)	ANSI 125 FF	6"
MAOP	(psig)	175
Flow Capacity	(cfh)	25000
Rangeability @ ± 1% Error		90:1
Rangeability @ ± 2% Error		180:1
Start Rate	(cfh)	14.5
Stop Rate	(cfh)	8.0
Differential @ 100% Flow	(I.W.C.)	3.00
Instrument Drive Rate	(cf/rev)	100
LF Pulser (Optional on Std Ctr)	(cf/pulse)	100

### CORRECTED FLOW CAPACITY AND TYPICAL ACCURACY GUIDE

RM25000 METER (SCFH)	
Gauge Pressure P.S.I.G. 0.25	RM25000 Qmax = 25000ft <sup>3</sup> /hr
2	26137
5	32926
10	41412
15	49898
20	58384
25	66870
50	109300
75	151731
100	194161
125	236592
150	279022
175	321453



# ROMET

**GAS METERS AND ELECTRONIC INSTRUMENTS**

Phone 905-624-1591 USA 1-800-387-3201

www.rometlimited.com • email: romet@rometlimited.com

The values quoted are typical of normal production. They do not constitute a specification. Romet Limited reserves the right to change any information in this literature without notice. All of the information and data in this literature has been carefully compiled and thoroughly checked. However, Romet Limited will not assume responsibility for any possible omissions or errors.

ROMET and ROMET & DESIGN are registered trademarks of Romet Limited. Romet Limited's gas metering technology is protected under U.S. Patent No. 4,910,519 and 6,453,721 and Canadian Patent No. 1,293,568.