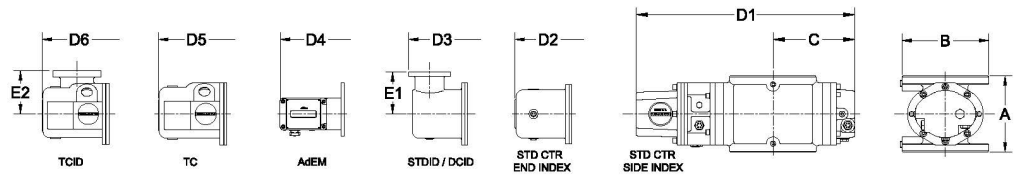
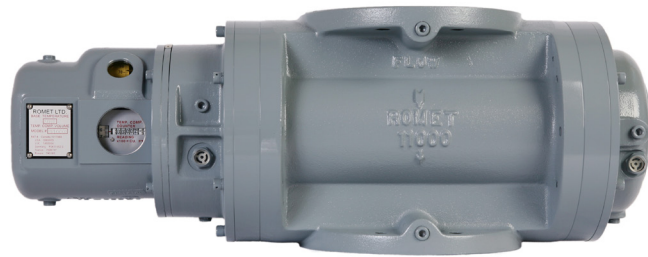




ROMET

Rotary Gas Meters



METER SIZE	ANSI 125 FF FLANGE	A	B	C	D1	D2	D3	D4	D5	D6	E1	E2	WEIGHT (lbs)
RM300	4"	9.50"	Ø 9.0"	9.28"	22.39"	23.81"	24.66"	25.59"	25.13"	25.19"	4.00"	4.00"	56-66

RM300 - SOFT METRIC

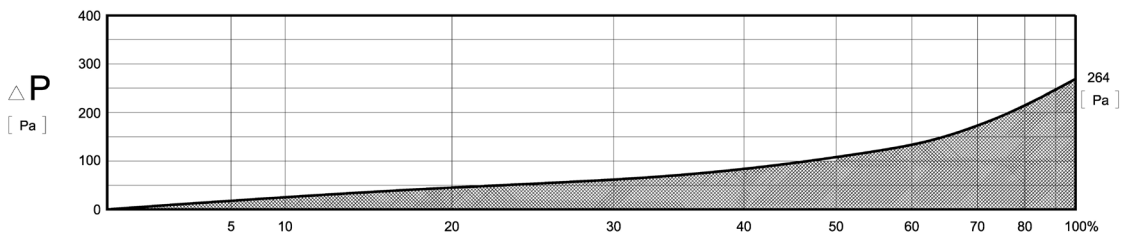
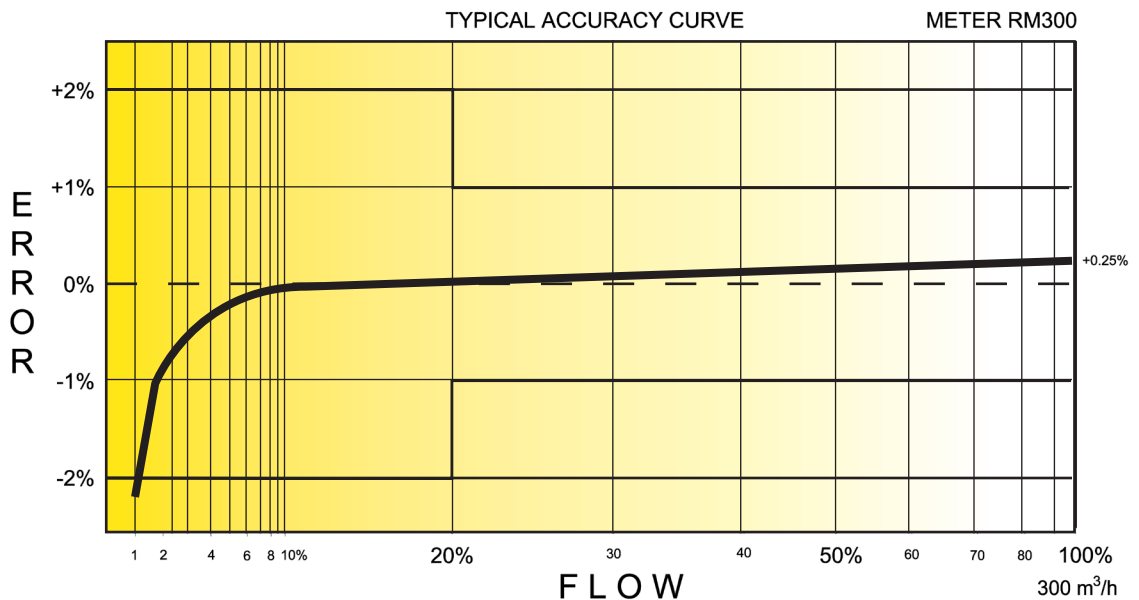
SOFT METRIC RM300 4" FLANGE CONNECTION

TECHNICAL SPECIFICATION

Connection (Flange)	ANSI 125FF	4"
MAOP	(kPa)	1206
Flow Capacity	(m ³ /h)	300
Rangeability @ ± 1% Error		60:1
Rangeability @ ± 2% Error		100:1
Start Rate	(m ³ /h)	.184
Stop Rate	(m ³ /h)	.119
Differential @ 100% Flow	(Pa)	264
Instrument Drive Rate	(m ³ /rev)	1.0
LF Pulser (Optional on Std Ctr)	(m ³ /pulse)	1.0

CORRECTED FLOW CAPACITY AND TYPICAL ACCURACY GUIDE

RM300 METER (SM ³ /H)	
Gauge Pressure kPa 1.72	RM300 Qmax = 300 m ³ /hr
5	313.8
10	328.6
50	447.1
100	595.1
150	743.1
200	891.2
250	1039.2
300	1187.3
500	1779.4
750	2519.6
1000	3259.8
1100	3555.9
1200	3852.0



ROMET

GAS METERS AND ELECTRONIC INSTRUMENTS

Phone 905-624-1591 USA 1-800-387-3201

www.rometlimited.com • email: romet@rometlimited.com

The values quoted are typical of normal production. They do not constitute a specification. Romet Limited reserves the right to change any information in this literature without notice. All of the information and data in this literature has been carefully compiled and thoroughly checked. However, Romet Limited will not assume responsibility for any possible omissions or errors.

ROMET and ROMET & DESIGN are registered trademarks of Romet Limited. Romet Limited's gas metering technology is protected under U.S. Patent No. 4,910,519 and 6,453,721 and Canadian Patent No. 1,293,568.