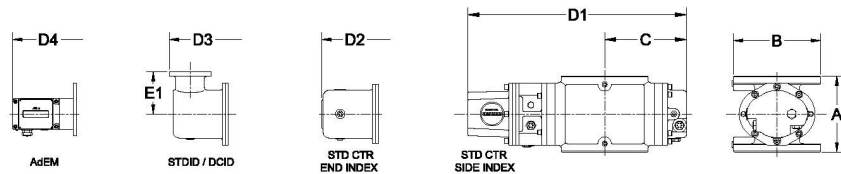
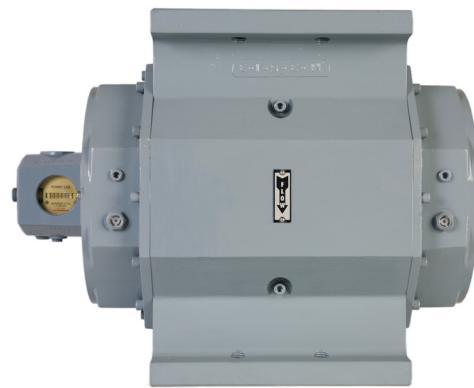




ROMET

Rotary Gas Meters



METER SIZE	ANSI 125 FF FLANGE	A	B	C	D1	D2	D3	D4	E1	WEIGHT (lbs)
RM700	6"	16.00"	11.25"	8.93"	20.95"	22.43"	23.21"	24.15"	4.00"	126

RM700 - SOFT METRIC

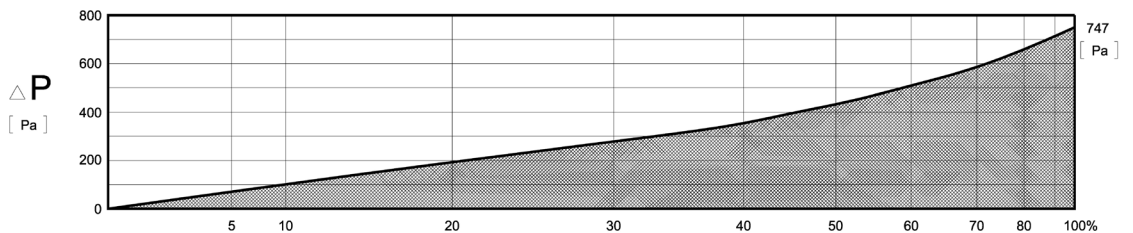
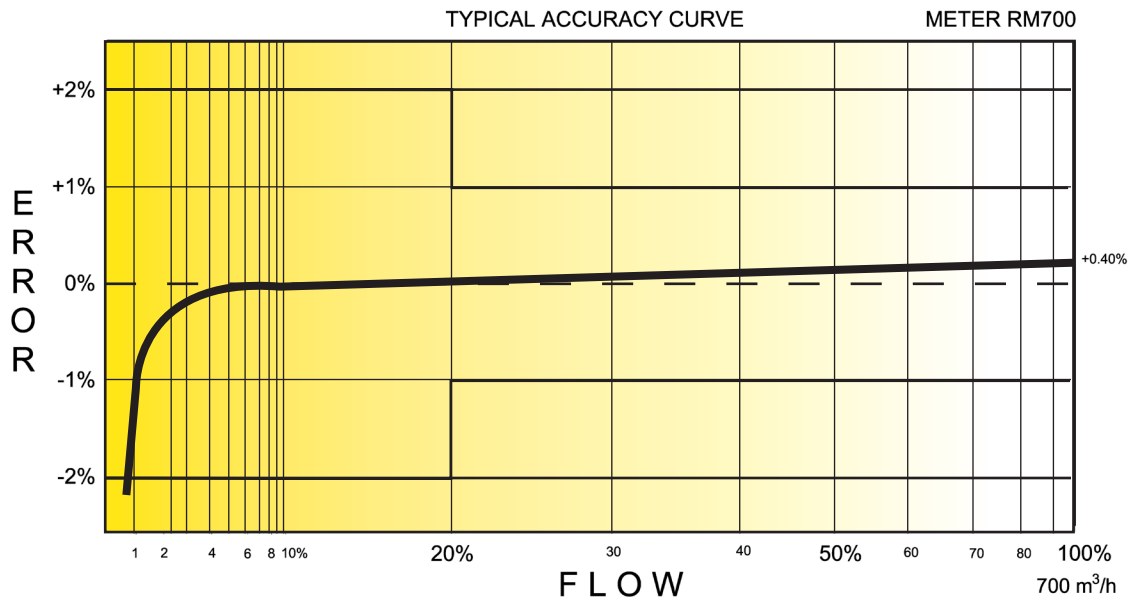
SOFT METRIC RM700 6" FLANGE CONNECTION

TECHNICAL SPECIFICATION

Connection (Flange)	ANSI 125FF	6"
MAOP	(kPa)	1206
Flow Capacity	(m ³ /h)	700
Rangeability @ ± 1% Error		90:1
Rangeability @ ± 2% Error		180:1
Start Rate	(m ³ /h)	.410
Stop Rate	(m ³ /h)	.226
Differential @ 100% Flow	(Pa)	747
Instrument Drive Rate	(m ³ /rev)	1.0
LF Pulsar (Optional on Std Ctr)	(m ³ /pulse)	1.0

CORRECTED FLOW CAPACITY AND TYPICAL ACCURACY GUIDE

RM700 METER (SM ³ /H)	
Gauge Pressure kPa 1.72	RM700 Qmax = 700 m ³ /hr
5	732.0
10	767.0
50	1043.0
100	1389.0
150	1734.0
200	2079.0
250	2425.0
300	2770.0
500	4152.0
750	5879.0
1000	7606.0
1100	8297.0
1200	8988.0



ROMET

GAS METERS AND ELECTRONIC INSTRUMENTS

Phone 905-624-1591 USA 1-800-387-3201

www.rometlimited.com • email: romet@rometlimited.com

The values quoted are typical of normal production. They do not constitute a specification. Romet Limited reserves the right to change any information in this literature without notice. All of the information and data in this literature has been carefully compiled and thoroughly checked. However, Romet Limited will not assume responsibility for any possible omissions or errors.

ROMET and ROMET & DESIGN are registered trademarks of Romet Limited. Romet Limited's gas metering technology is protected under U.S. Patent No. 4,910,519 and 6,453,721 and Canadian Patent No. 1,293,568.