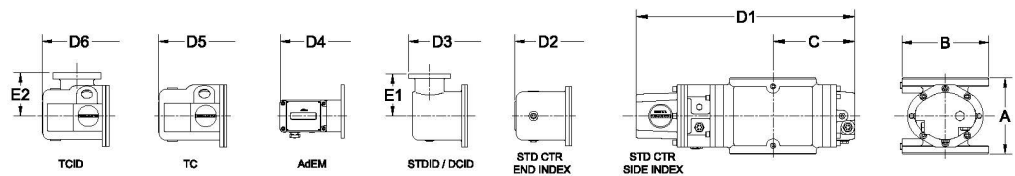
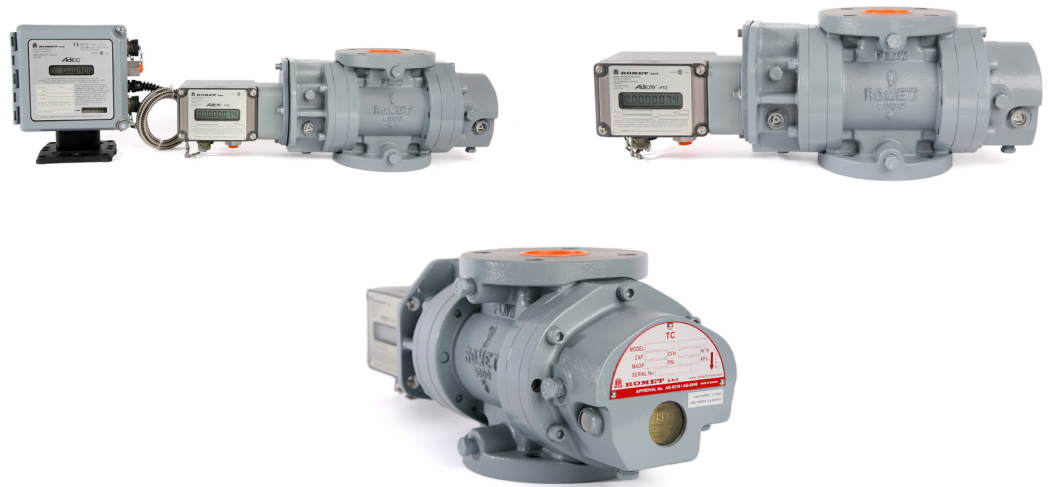




**ROMET**

# Rotary Gas Meters



METER SIZE	ANSI 125 FF FLANGE	A	B	C	D1	D2	D3	D4	D5	D6	E1	E2	WEIGHT (lbs)
RM85	2"	6.75"	Ø 6.0"	5.58"	14.93"	16.36"	17.19"	18.13"	17.48"	17.53"	4.00"	4.00"	26-36

**RM85 - SOFT METRIC**

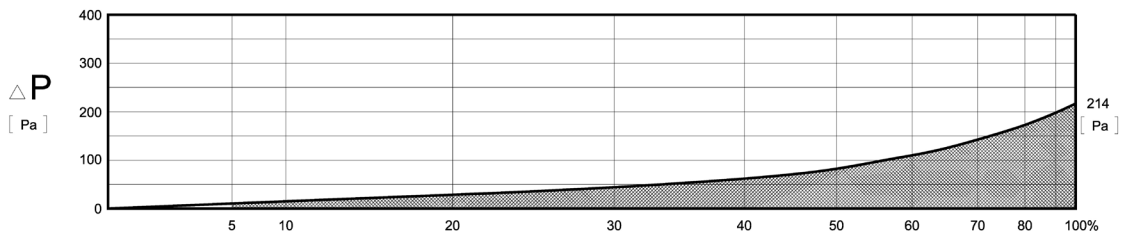
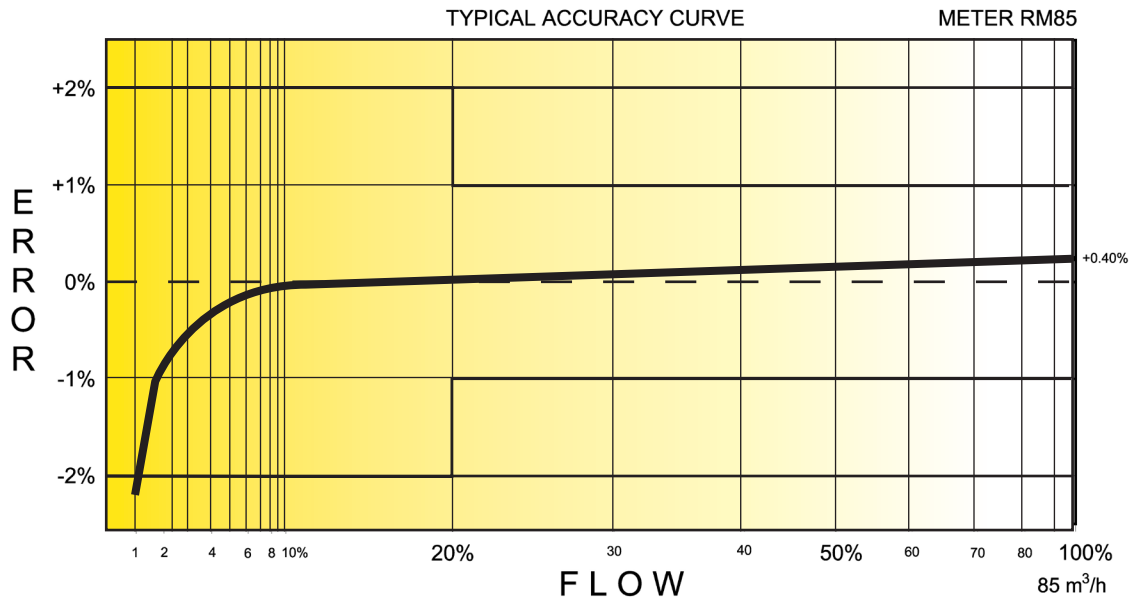
# SOFT METRIC RM85 2" FLANGE CONNECTION

## TECHNICAL SPECIFICATION

Connection (Flange)	ANSI 125FF	2"
MAOP	(kPa)	1206
Flow Capacity	(m <sup>3</sup> /h)	85
Rangeability @ ± 1% Error		60:1
Rangeability @ ± 2% Error		100:1
Start Rate	(m <sup>3</sup> /h)	.113
Stop Rate	(m <sup>3</sup> /h)	.093
Differential @ 100% Flow	(Pa)	214
Instrument Drive Rate	(m <sup>3</sup> /rev)	.1
LF Pulsar (Optional on Std Ctr)	(m <sup>3</sup> /pulse)	.1

### CORRECTED FLOW CAPACITY AND TYPICAL ACCURACY GUIDE

RM85 METER (SM <sup>3</sup> /H)	
Gauge Pressure kPa 1.72	RM85 Qmax = 85 m <sup>3</sup> /hr
5	88.9
10	93.1
50	126.7
100	168.6
150	210.6
200	252.5
250	294.4
300	336.4
500	504.2
750	713.9
1000	923.6
1100	1007.5
1200	1091.4



# ROMET

**GAS METERS AND ELECTRONIC INSTRUMENTS**

Phone 905-624-1591 USA 1-800-387-3201

www.rometlimited.com • email: romet@rometlimited.com

The values quoted are typical of normal production. They do not constitute a specification. Romet Limited reserves the right to change any information in this literature without notice. All of the information and data in this literature has been carefully compiled and thoroughly checked. However, Romet Limited will not assume responsibility for any possible omissions or errors.

ROMET and ROMET & DESIGN are registered trademarks of Romet Limited. Romet Limited's gas metering technology is protected under U.S. Patent No. 4,910,519 and 6,453,721 and Canadian Patent No. 1,293,568.