

# Residential Gas Meter

## Installation Instructions



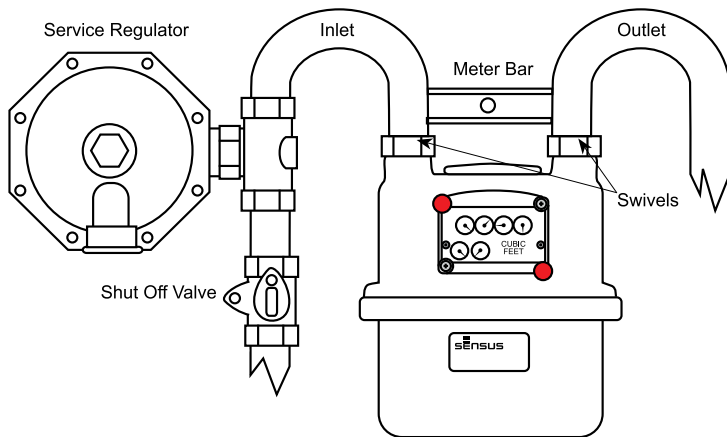
### CAUTION

Only qualified personnel should install or service a gas meter. Installation must be in compliance with all jurisdictional codes.



### CAUTION

Before you begin: Verify that piping, shut off valve, regulator, meter bar/swivels, grounding and/or any other meter set appliances are in good condition; observe and report excessive rust or decay and follow all applicable codes, regulations and policies. Install the meter in a level, upright position that does not permit the meter to contact concrete or soil.



### Installation and Start-Up

1. Remove dust caps covering the inlet and outlet ferrules
2. Position under the meter bar or inlet piping and thread the swivel nut onto the meter inlet ferrule and secure the nut loosely by hand.
3. Purge air from the meter by opening the shut off valve and pressurizing the meter.
4. Thread the outlet swivel nut onto the meter outlet ferrule and tighten the nut by hand.



### CAUTION

If no meter bar is present: do not force piping to align swivel nuts with meter ferrules.

5. Tighten both inlet and outlet swivel nuts to 20 ft./lbs. (roughly a one-third rotation of the swivel nut) using a pipe wrench. Do not over-tighten the nut as this may damage the swivel gasket.
6. Use a soap solution to check for leaks at all connections.
7. Purge the customer house line prior to lighting appliances and follow utility procedures to ensure all gas appliances are working properly.



### Storage and Handling

Sensus residential meters are durable measurement devices designed to meet or exceed ANSI B.109 standards. Care should be taken when handling gas meters to ensure accuracy and longevity.

Store meters in an upright position with ferrule dust caps in place. Store meters upright on a pallet or shelf (not in direct contact with the ground). Meters can be stacked; separate levels with an approved corrugated material or particle board. Do not stack higher than five levels as shown.

### A Note About Sensus and Pipeline Safety...



Sensus is committed to supporting utility company efforts to educate contractors and homeowners on the importance of safely digging near gas lines. That's why all Sensus gas meters delivered in the United States include Call 811 safety messaging as standard equipment.

Sensus' participation in the Call 811 campaign is designed to help utilities

in their continuing efforts to inform their customers and comply with RP1162 requirements, which was adopted by the U.S. DOT in response to the Pipeline Safety Improvement Act (PSIA) of 2002.

As part of our commitment to this program, Call 811 decals are produced and affixed to the meters at no additional charge to our distributors or utility customers.

All products purchased and services performed are subject to Sensus terms of sale, available at either: <http://na.sensus.com/TC/TermsConditions.pdf> or 1-800-METER-IT. Sensus reserves the right to modify these terms and conditions in its own discretion without notice to the customer.

This document is for informational purposes only, and SENSUS MAKES NO EXPRESS WARRANTIES IN THIS DOCUMENT. FURTHERMORE, THERE ARE NO IMPLIED WARRANTIES, INCLUDING WITHOUT LIMITATION, WARRANTIES AS TO FITNESS FOR A PARTICULAR PURPOSE AND MERCHANTABILITY. ANY USE OF THE PRODUCTS NOT SPECIFICALLY PERMITTED HEREIN IS PROHIBITED.